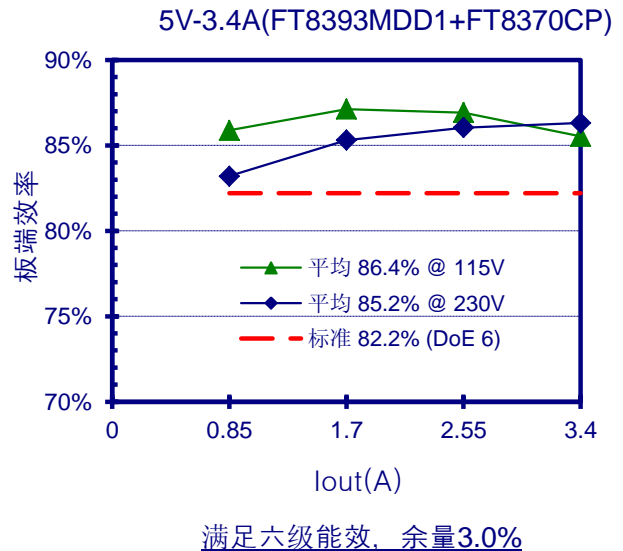
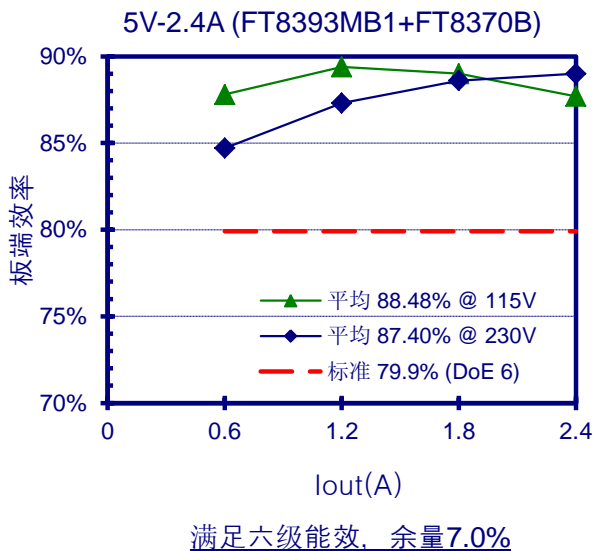
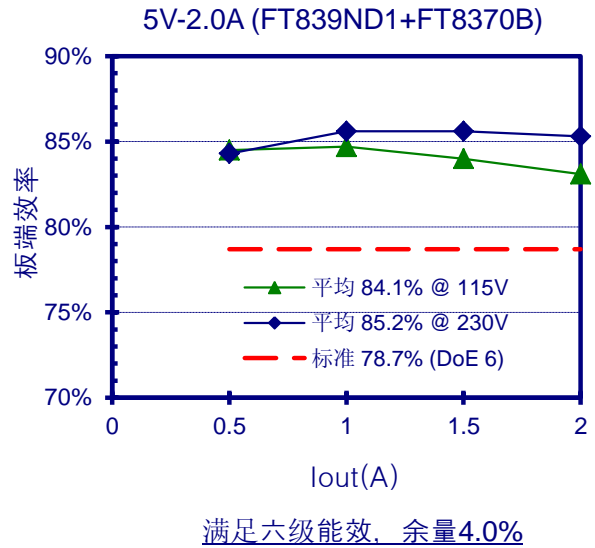
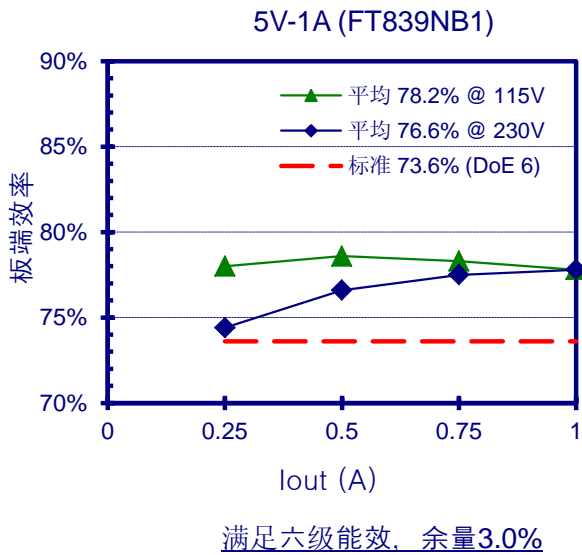


# PSR充电器/适配器 (DoE/CoC六级)

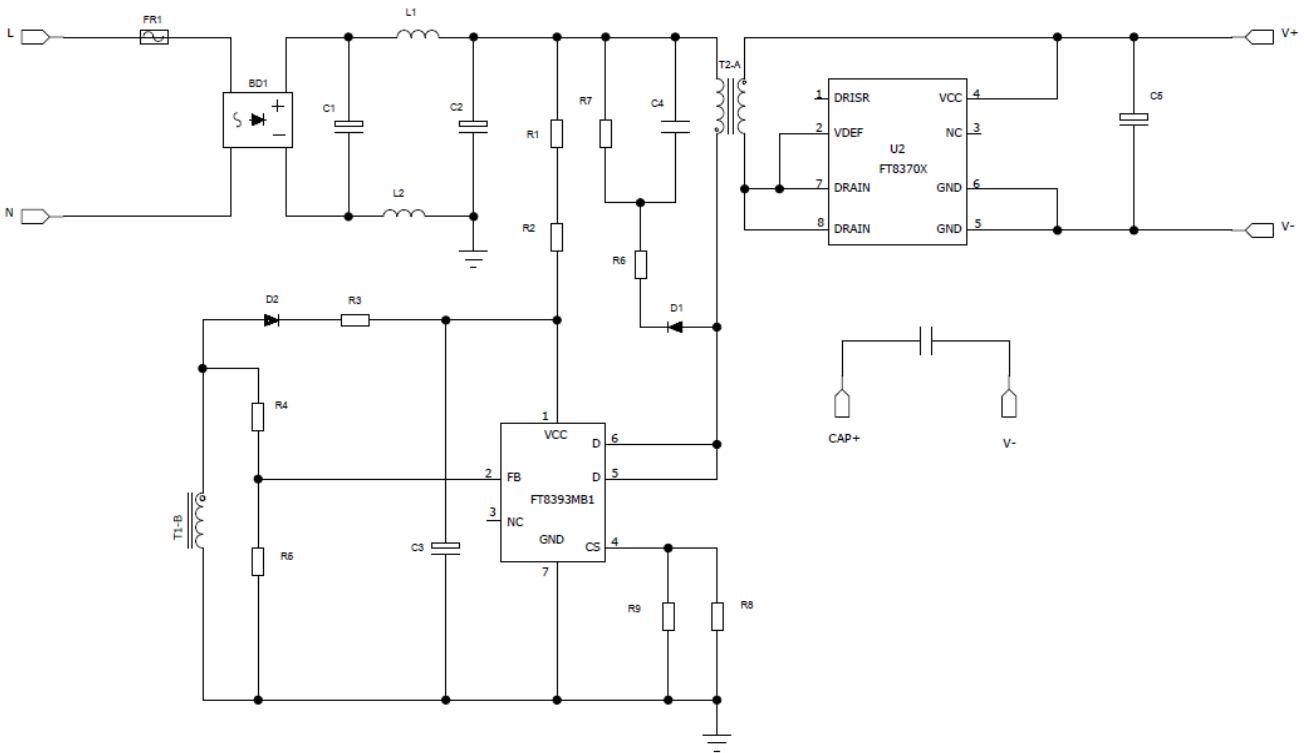
## (FT839xx/FT8393xx: AC-DC 恒压恒流芯片)

- 内置功率管、性能稳定
- 成本低, 体积小
- 效率高, 满足六级能效
- 瓦数可覆盖3W~50W
- 没有噪声
- EMC容易通过, 满足UL/CE标准

输出(W)	典型应用	型号		封装	5V输出时, 推荐搭配我司同步整流	
3 ~ 5	5V1.0A / 12V0.4A	FT839N	Ax	SOP8	-	
6	5V1.2A / 12V0.6A		Bx		-	
10	5V2.0A / 12V1.0A		Dx		FT8370B (SOP8)	
12	5V2.4A / 12V1.4A	FT8393M	Bx	SOP7	FT8370CP (PSOP8)	
18	5V3.4A / 12V2.0A		DDx	DIP7	FT8370CP (PSOP8)	
18 ~ 50	5V3.5A ~ 5V10A 12V2.1A ~ 12V4A		+外推MOS	SOT23-5	5V 4A: FT8370B+FT8370B	
					5V / 5A~10A : FT8370B+外推MOS	



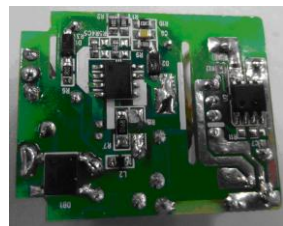
# 5V-2.4A (FT8393MB1+FT8370B)



部分样机图片

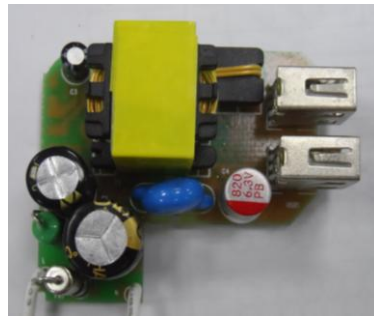


顶视图

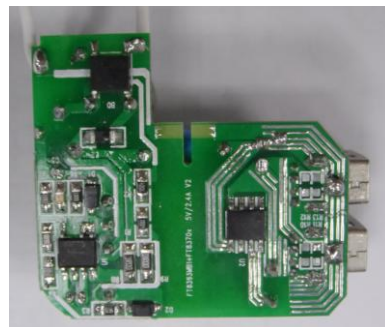


底视图

5V2A  
(FT839ND1+FT8370B)

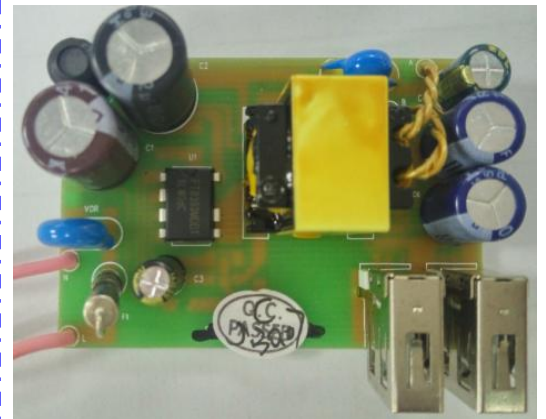


顶视图

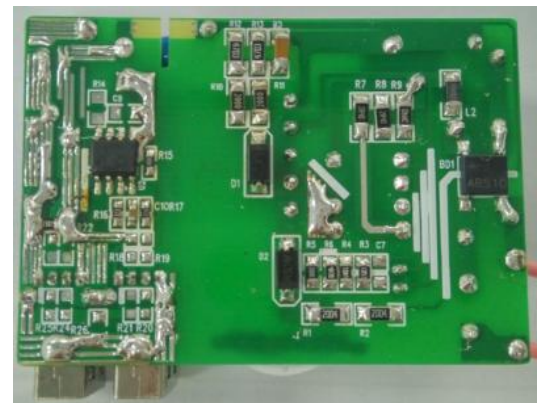


底视图

5V2.4A  
(FT8393MB1+FT8370B)



顶视图



底视图

5V3.4A  
(FT8393MDD1)

(本资料仅供参考，请以正式资料为准)